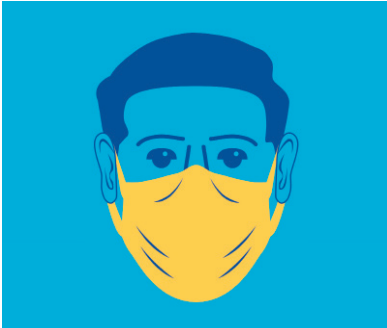


IN STORE: FROM NOVEMBER 30

WHAT YOU NEED TO KNOW

FACE COVERINGS



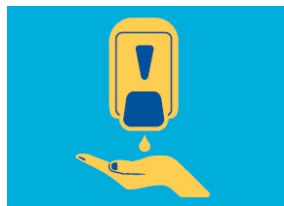
- ▶ Customers in England are required by law to wear a face covering while in the store, unless they are exempt.
- ▶ You can still ask customers to lower or remove a face covering to ID them for age restricted products like alcohol.
- ▶ Colleagues working in areas accessible to the public (e.g. the shop floor) are required to wear a face covering unless they are exempt

OTHER MEASURES IN STORE

There is no legal requirement to have additional measures in store to reduce the risk of spreading Covid-19, but you may want to keep some measures to help make customers and other colleagues feel more comfortable, such as:



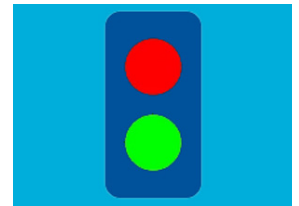
PERSPEX SCREENS



HAND SANITISER



DISTANCING MARKERS



LIMIT CUSTOMER NUMBERS

SELF ISOLATING



- ▶ If you have been identified as a close contact of someone suspected to have the Omicron variant, you must self isolate for 10 days regardless of vaccine status.
- ▶ You should self isolate if you have Covid-19 symptoms OR if you are asked to do so by NHS Test and Trace.
- ▶ If you are self-isolating because you have Covid-19 symptoms, your 10 day isolation starts from the first day that you show symptoms.
- ▶ If you test negative for Covid-19 after showing symptoms, you do not need to self isolate unless asked to do so by NHS Test and Trace.
- ▶ If you are self-isolating because you have been asked to do so by NHS Test and Trace, your 10 day isolation starts from the first day that you are notified.